

PLANIT

Presenting
**Assisted Living
Portfolio**



PLANIT



WHO WE ARE

PLANIT Studios' multi-disciplinary team of designers, and project managers excels at creative problem solving and developing project delivery strategies for healthcare providers, colleges and universities, municipal and state government agencies, and private developers. Areas of expertise include signage and wayfinding, branding and messaging, and product design and app development, landscape architecture and site planning, permitting and zoning, site investigation and analysis.

PLANIT Studios represents a diverse collection of talented individuals who share the same core philosophies, enjoy doing great work, and most importantly, collaborate and contribute to generating ideas that move our clients from chaos to concept. Furthermore, we share the belief that our clients are at the center of everything we do.

In other words, we are here to solve "IT".

WHAT WE DO

GRAPHIC DESIGN

Full service designs crafted from insights to deliver a consistent visual language.

LANDSCAPE ARCHITECTURE

Beautiful and functional environments designed to impact communities.

WAYFINDING

Confidence and direction starts with designing for the first time visitor.

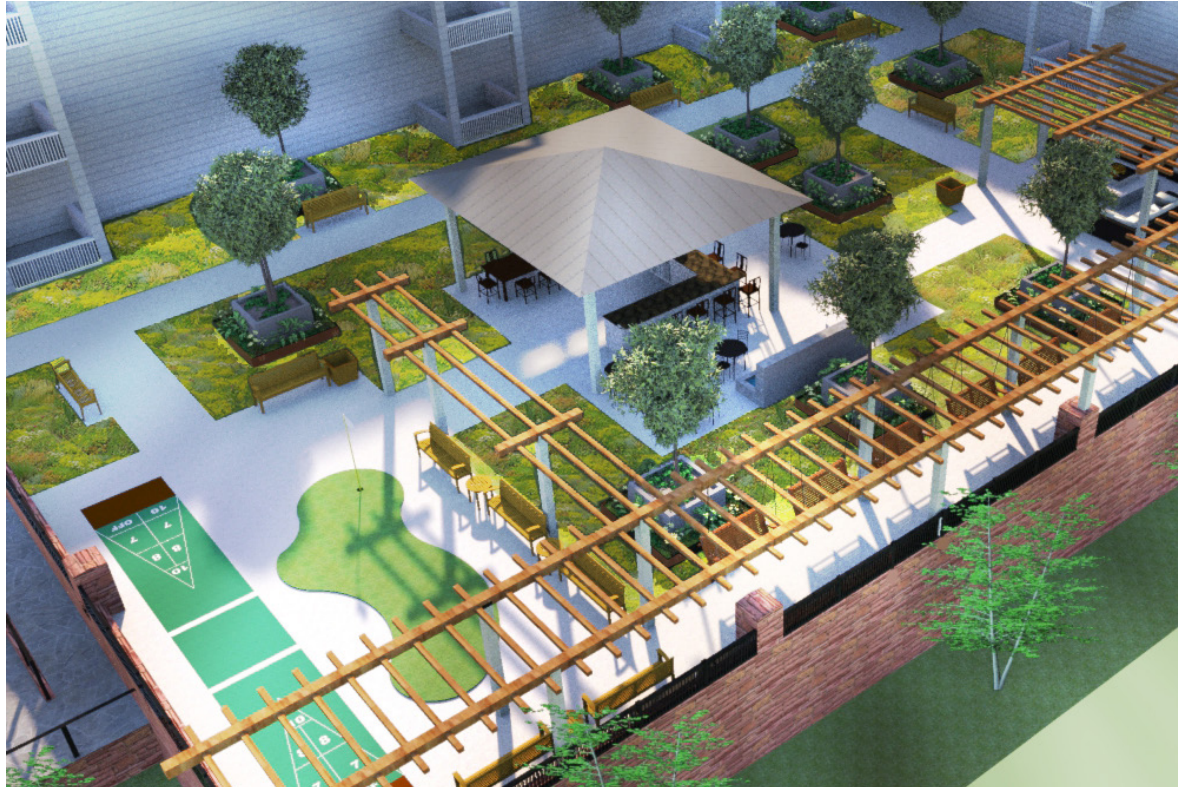
ASSISTED LIVING

Today's seniors have a definite mindset about what they want in retirement communities. With the assisted living options becoming more and more available, assisted living developers understand the need for offering a product that reflects the energy of and delivers the lifestyle sought by their targeted demographic. Here at PLANIT, we work closely with each assisted living client to not only ensure their property reflects the strength of their brand, but also delivers the "experience" that grabs the prospective resident's attention and generates that sense of urgency for needing to be part of the community. The more successful your development is, the more likely it will draw competitors—all the more reason why unique or distinctive amenities are absolutely necessary.

We strive to work with project architects and interior designers to convey a non-institutional look through the building's design vernacular and finishes. As designers we need tailor spaces to meet the demands of seniors who want to keep fit—in body and mind. Whether it's creating the brand, producing eye-catching marketing graphics, designing inviting amenity spaces, producing strategies for navigating the property or providing tools to assist with the sales process, PLANIT offers a single source for positioning our commercial development clients for success.

PLANIT

Scope: Landscape Architecture
Location: Otterbein Lebanon Campus, Ohio



OTTERBEIN TERRACE

The garden at the Senior Living facility was a roof top garden that looked to deliver a higher energy experience for their users.

With parking garage below and units above, the garden is the centerpiece of the development and can be seen from the balconies of half of the facility. The space encourages social interaction with a covered outdoor kitchen, a large table for dinners, café tables and chairs, a water feature, and group seating around the gas fire pit.

Leisurely activity is encouraged with a putting green, and shuffle board, while shade is provided via an interlinked trellis system that offers bench swings oriented for relaxing and watching the sunset.



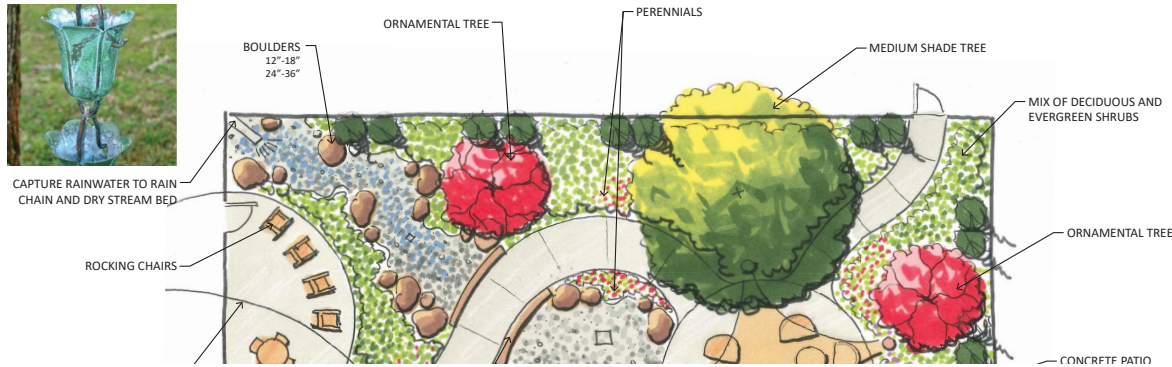
PLANIT



Scope: Landscape Architecture
Location: Otterbein Lebanon Campus, Ohio

PLAN IT

Scope: Landscape Architecture
Location: Wadsworth and Green, Ohio



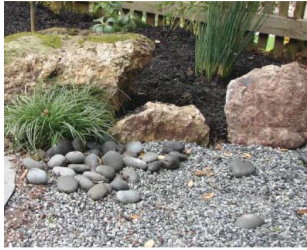
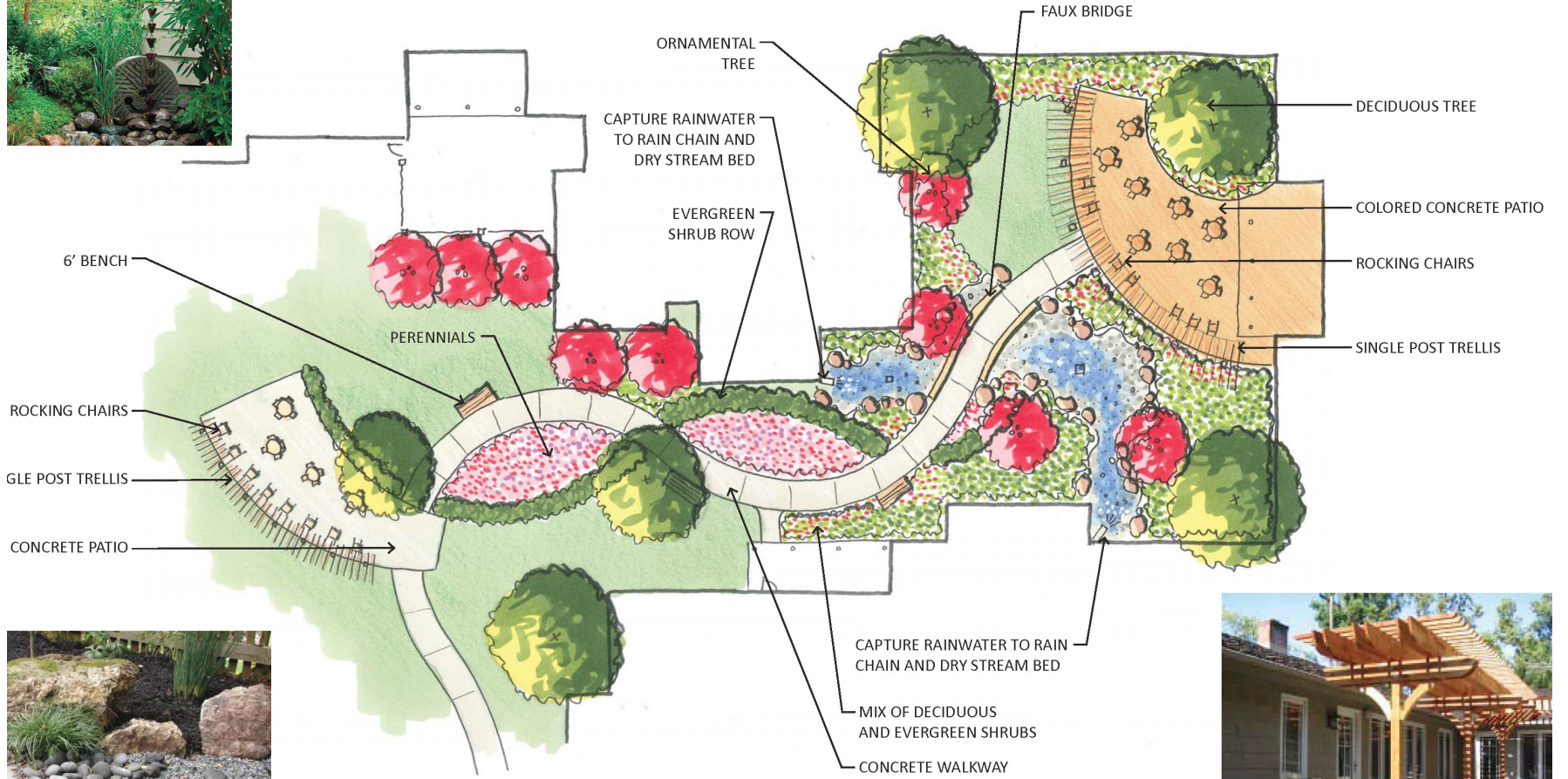
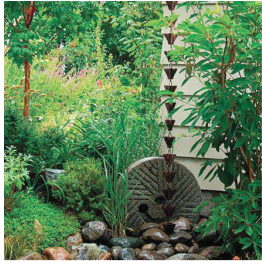
ST. EDWARD AT WADSWORTH

St. Edwards was looking to build two facilities in Wadsworth and Green, Ohio that would include differing levels of assistance and include Independent Living, Assisted Living, and two Memory Care units. Plan It designed the site landscaping as well as all of the individual gardens for the project, for both of these facilities in parallel. Spaces included the Dining Garden, Memory Care Garden 1 and 2, Assisted Living Courtyard, Main Entry for Independent Living, and the Main Entry Plaza.

Functional rain gardens are integrated in all of the gardens and are fed by rain chains from the downspouts. These elements add year round interest and motion in each of the spaces. The Dining Garden boasts shade structures, furnishings, beautiful landscape, and a perennial garden stroll path leading to the forest overlook. The Assisted Living Courtyard includes shade structures, furnishings, beautiful landscape, and potting stations.

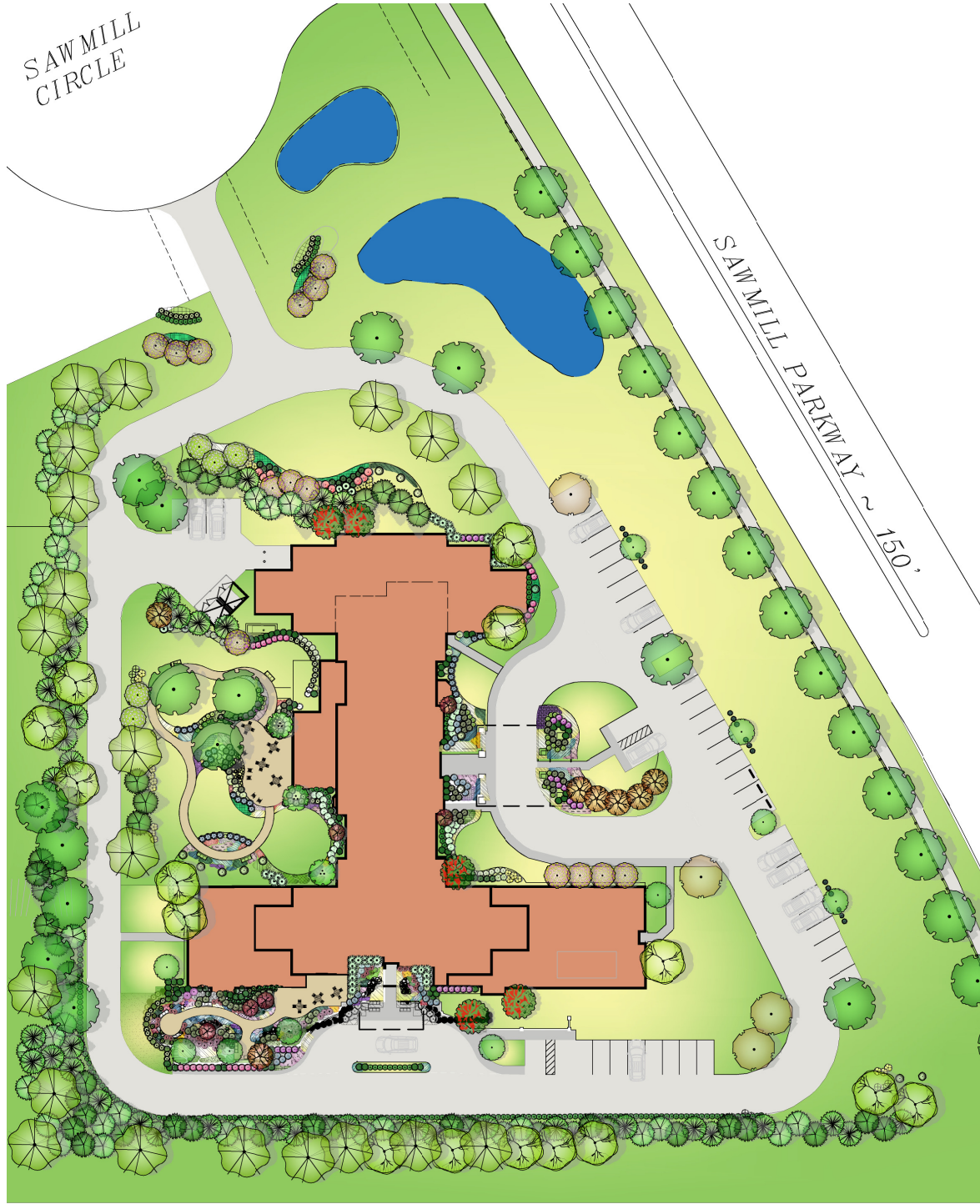
PLAN IT

Scope: Landscape Architecture
 Location: Wadsworth and Green, Ohio



PLAN IT

Scope: Landscape Architecture
Location: Dublin, Ohio



SAWMILL ALC

The Sawmill ALC is a 4 story facility located near existing single family homes so screening and softening was critical for its acceptance in the community. Softening the building at the main entry and access road was accomplished with landscaping that complemented the architecture and created a pleasant entrance experience.

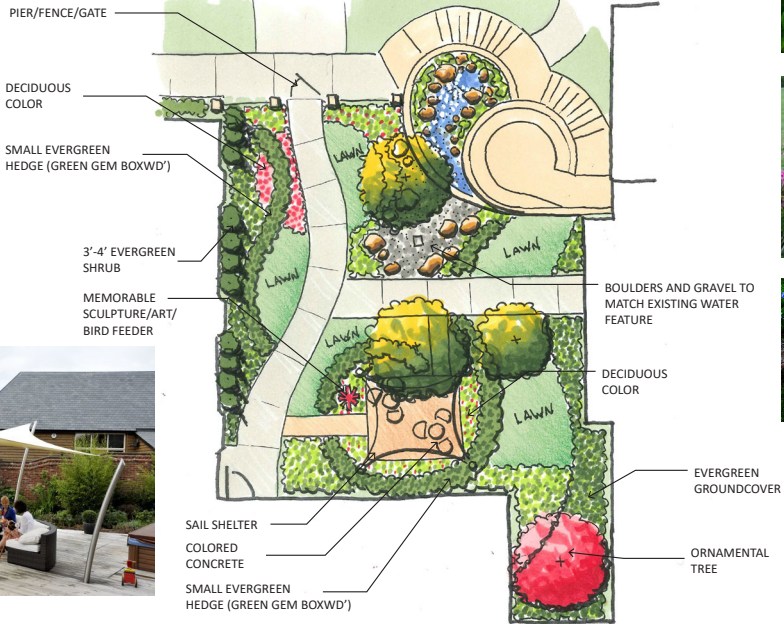
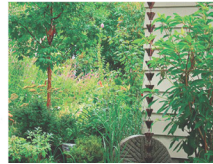
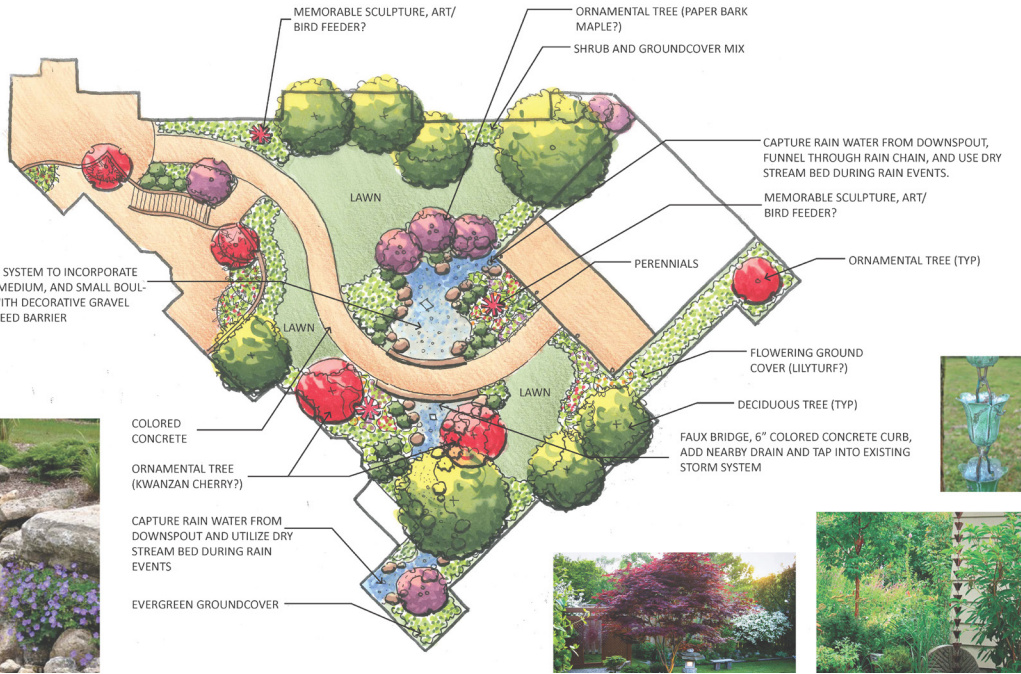
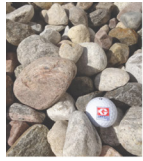
Providing green respite space for users was critical to the success of the facility and the Main Garden and Memory Garden quickly became a priority for the project.

The covered patio provides shaded and rain proof seating opportunities next to the Main Garden. A nearby water feature provides soothing sounds while the patrons view the garden along with numerous bird feeders. A looped walking path seeks to encourage activity and active meditation, and provides periodic seating for rest.

The Memory Garden provides green space for users that is easy to navigate and safe. Shaded seating is available, while fragrant plants, in a residential design style, seek to encourage memories of the past.

PLAN IT

Scope: Conceptualization, Landscape Architecture
Location: Delaware, Ohio



WILLOWBROOK

Responding to a recent building additions, The Willow Brook Christian Home was looking to renovate and add new exterior spaces in two of their facilities. Plan It conceptualized a Memory Garden adjacent to the newly renovated Memory Care Unit at the Willow Brook at Delaware Run, complete with a short walking path, shade sail structure, and furnishings.

In the same facility, the Courtyard off of the newly expanded main dining area was redesigned. The courtyard amenities included a small stroll garden, beautiful landscape, and a functional dry stream bed. During rain events, the stream bed is connected to the gutters via rain chains, and the garden comes alive with a passive water feature that offers year round interest.

The existing courtyard on Lazelle Road was redesigned with new landscaping, fence, gate, and trellis, and is now the main respite area for the facility.

PLAN IT

Scope: Landscape Architecture
Location: Fairlawn, Ohio



THE VILLAGE OF ST. EDWARD COURTYARD

The St. Edward Courtyard was driven by the need for an outdoor multi-use space, and the desire to amend drainage issues that were complicated by a recent facility expansion. Dubbed the “Swamp of Sadness” by the daughter of one of the staff members, amending the drainage issues, and turning them into amenities was the first priority. All downspouts and grade drainage was directed to a central “dry stream basin” formed with boulders, and decorative gravel.

Amenities include a walking path, shelter, putting green, shuffleboard court, a toddler play area, raised planters, rain barrels for the planting programs, sturdy benches for rest, and a contemplation space. The contemplation space was designed as a circular space, bounded with custom floral metal screens, with an off center fountain as a focal point. The surrounding sturdy wooden bench allows multiple family members to share the space, and offers a peaceful space to reflect and meditate. design style, seek to encourage memories of the past.

CONTACT INFORMATION

ANDY ENGLISH

Principal

Phone: (614) 505-0375 ext. 701

Email: aenglish@planitstudios.com

Website: www.planitstudios.com